

EMERGENCY EVACUATION PLAN

August 2020



Prepared for:

Village of Sayward
652-A H'Kusam Way
PO Box 29
Sayward BC V0P 1R0

Prepared by:

Behr Integrated Solutions Inc.
750, 600 – 6 Avenue SW
Calgary AB T2P 0S5
403-444-6940

www.behrintegrated.com



ACRONYMS

| | | | |
|------|------------------------------------|------|------------------------------|
| BC | British Columbia | EOC | Emergency Operations Center |
| CWPP | Community Wildfire Protection Plan | ERP | Emergency Response Plan |
| EMBC | Emergency Management BC | SOLE | State of Local Emergency |
| ESS | Emergency Support Services | SRD | Strathcona Regional District |

PLAN DISTRIBUTION AND MAINTENANCE

Record of Revisions

| Date | Annual Update (Y/N) | Details |
|------|---------------------|---------|
| | | |
| | | |
| | | |
| | | |
| | | |
| | | |

Distribution List

| Recipient | | Location | Copies | | | Manual No. |
|---------------------------------|-----------|----------|--------|------|----|------------|
| | | | C* | N/C* | E* | |
| Internal Recipients | | | | | | |
| | | | | | | |
| | | | | | | |
| | | | | | | |
| Total Copies | | | | | | |
| External Recipients | | | | | | |
| Agency | Recipient | Location | C* | N/C* | E* | Manual No. |
| | | | | | | |
| | | | | | | |
| | | | | | | |
| | | | | | | |
| Total Copies | | | | | | |
| TOTAL COPIES DISTRIBUTED | | | | | | |

*C denotes confidential information within the Plan

*E denotes electronic copy

*N/C denotes confidential information has been removed from the Plan

AMENDMENT PROTOCOL

This Emergency Evacuation Plan (plan) will be reviewed, validated and updated annually, or as required, by the Emergency Plan Coordinator.

All amendments will be distributed to each individual plan holder who will be responsible for incorporating them as they are received. A record of all amendments will be maintained utilizing the Record of Revisions at the front of this plan.

As a registered holder of this plan, you have an obligation to assist in the maintenance of accurate up to date information. If you detect an error in the plan, or subsequent to its revision publication date, become aware of any changes to any information contained herein, please forward such information as soon as possible to:

| | |
|---------------|-------------------------------|
| Attn: | Emergency Program Coordinator |
| Phone: | 250-282-5512 |
| Email: | epc@saywardvalley.ca |

This page has been left blank intentionally.

TABLE OF CONTENTS

| | |
|--|----------|
| SECTION 1 INTRODUCTION | 1 |
| 1.1 Purpose | 1 |
| 1.2 Scope..... | 1 |
| 1.3 Background | 2 |
| SECTION 2 OPERATIONAL EVACUATION PLAN | 6 |
| 2.1 Overview | 6 |
| 2.2 Evacuation Response Actions | 7 |
| 2.2.1 Evacuation Response Flow Chart..... | 7 |
| 2.3 Evacuation Response | 8 |
| 2.3.1 Threat Level Monitoring | 8 |
| 2.3.2 Evacuation Trigger Points | 9 |
| 2.3.3 Vulnerable Population | 11 |
| 2.3.3.1 Special Facilities..... | 11 |
| 2.3.3.2 Special Needs Population | 11 |
| 2.3.3.3 Schools and Childcare..... | 12 |
| 2.3.3.4 Non-residents and Seasonal Visitors..... | 12 |
| 2.3.4 Levels of Evacuation..... | 12 |
| 2.3.4.1 Alert | 12 |
| 2.3.4.2 Level One | 12 |
| 2.3.4.3 Level Two | 12 |
| 2.3.4.4 Level Three | 13 |
| 2.3.5 Evacuation Stages | 13 |
| 2.3.5.1 Tactical Evacuation | 13 |
| 2.3.5.2 Stage 1 - Evacuation ALERT | 13 |
| 2.3.5.3 Stage 2 - Evacuation ORDER | 13 |
| 2.3.5.4 Stage 3 - Evacuation RESCIND | 13 |
| 2.3.6 Evacuation Zones | 14 |
| 2.3.7 Reception Centres..... | 14 |
| 2.3.8 Transportation Logistics..... | 15 |
| 2.3.9 Emergency Transportation Planning | 15 |
| 2.3.10 Evacuation Routes | 15 |
| 2.3.10.1 Zone 1 | 15 |
| 2.3.10.2 Zone 2 | 16 |
| 2.3.10.3 Zone 3 | 16 |
| 2.4 Emergency Alerting Systems | 16 |

| | | |
|---|----------------------------------|-------------|
| 2.4.1 | Media Alerts..... | 16 |
| 2.4.2 | Alert Ready..... | 16 |
| 2.4.3 | Public Evacuation Scripts | 16 |
| 2.4.4 | Access Control and Security..... | 17 |
| 2.4.5 | Recall of Evacuees..... | 17 |
| 2.4.6 | Re-entry Protocol..... | 17 |
| APPENDIX A - VULNERABLE POPULATIONS AND CRITICAL INFRASTRUCTURE..... | | 2-1 |
| APPENDIX B – SUPPORT SERVICES | | 2-5 |
| APPENDIX C – EMERGENCY OPERATIONS AND RECEPTION CENTRES | | 2-8 |
| APPENDIX D – SCRIPTS | | 2-11 |
| APPENDIX E – FORMS | | 2-16 |
| APPENDIX F – EQUIPMENT INVENTORY | | 2-18 |
| APPENDIX G – MAPS..... | | 2-24 |

SECTION 1 INTRODUCTION

1.1 Purpose

The purpose of this Emergency Evacuation Plan is to clearly align response objectives with operational procedures used by the Local Authority to facilitate a timely and effective response to an emergency situation requiring the full or partial evacuation of the Village of Sayward.

The plan includes:

- Criteria for assessing emergency situations
- Procedures for issuing emergency evacuation Alerts and Orders
- Evacuation considerations
- Geographical maps of evacuation zones and important features including vulnerable populations, critical infrastructure, reception centres and primary evacuation routes

This plan is to be used in conjunction with the Regional Emergency Plan, which provides additional overarching procedures to be used in any emergency, such as:

- BC Emergency Management System (BCEMS) Overview
- Roles and responsibilities
- EOC activation and management
- Guidelines for declaring a State of Local Emergency (SOLE)

1.2 Scope

This plan applies to any actual or anticipated emergency or disaster that could prompt the full or partial evacuation of the Village of Sayward, whether the emergency is within or outside of the Village boundaries. Evacuation specific response procedures are included within the plan for scenarios which are most likely to occur and / or will have the greatest impact on life, safety, the environment and infrastructure in the area.

This plan does not address emergencies that are handled under normal circumstances by on-scene first responding agencies.

1.3 Background

The Village of Sayward (Sayward) is a small village located on the northeast coast of Vancouver Island and is a part of the Greater Sayward Municipal Area which includes Kelsey Bay and Sayward Valley. This municipality is one of 5 others that are a part of the Strathcona Regional District.

The Village is situated on low land (30m elevation) with the Kelsey Bay and the Salmon River to the immediate east, and moderately sloping mountains and dense vegetation to the west. There is limited access to and from the area, with two main roads leading south to surrounding communities. The community is separated from the south by a small but important bridge at the junction leading to the Island Highway.

This combination of environmental factors pose a varying degree risk from wildfires and flooding that could prompt either a partial or full evacuation of the Village.

Wildfire Risk

A Community Wildfire Protection Plan (CWPP) was developed for the Village in 2011, and subsequently revised and updated in 2020 to identify wildfire risks to the community, assess potential consequences of a wildfire, and recommend ways to reduce the risk of a wildfire. Results for the 2020 updated assessment conclude that the risk of a wildfire in the region is low to high, while the local threat of a wildfire is low to moderate. Threat levels may increase particularly in the summer months of July to August. Elevated temperatures and a history of drought in the region are conducive to wildfire ignition to the west and south of the Village, with high risk areas as within 500m to the community boundaries.¹ See *Appendix E for Wildfire Risk and Wildfire Threat Maps*. Refer to CWPP for more detailed information.

Flood Risk

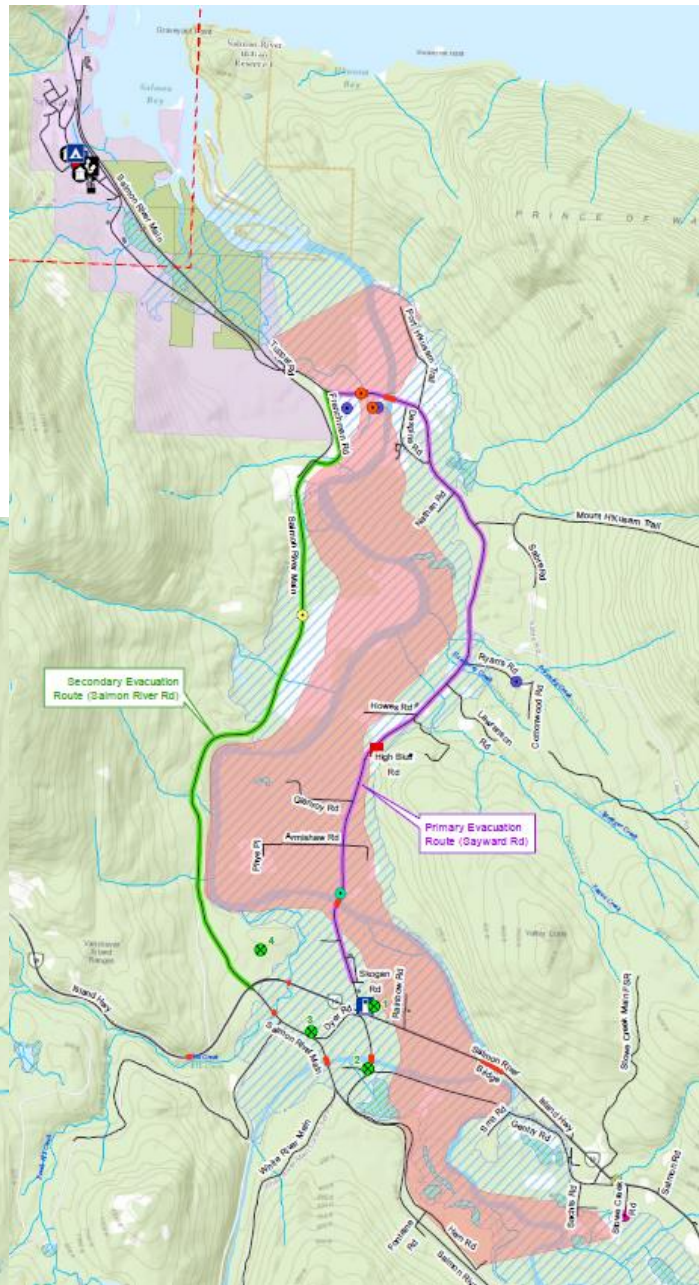
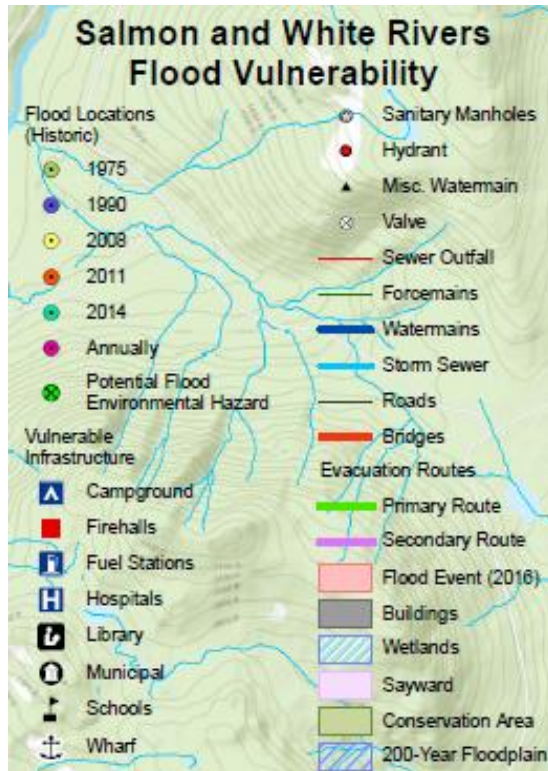
A flood Risk Assessment for the Salmon River Region, in combination with anecdotal evidence from community members, indicates that there is a significant flooding risk to the community. Heavy local rainfall in winter months, particularly in combination with freshet events are attributed to rapid onset flooding prompting localized and wide scale evacuation².

¹ Village of Sayward Community Wildfire Protection Plan (2020)

² RAIT FOR Salmon – White River, 2018.

Salmon & White Rivers Flood Risk Assessment

Project # 2221-49200 | Revision 0 | April 4, 2019



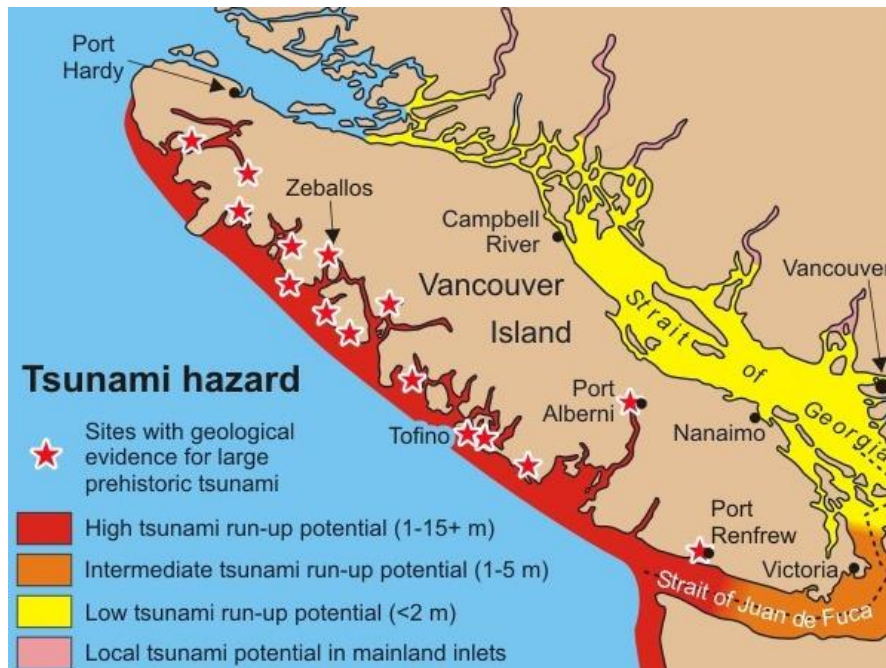
Earthquake Risk

Evidence suggests that the region could be affected by a major earthquake. Estimated shaking severity and tsunami zones indicate that the region would likely be negatively impacted, and there is potential for structural damage and some coastal flooding.

Vancouver Island Shake Hazard Map³



Vancouver Island Tsunami Hazard Map⁴



With the inherent risk to the community illustrated above, it is imperative that the Local Authorities have a pre-determined plan which facilitates:

- Effective communication between the Local Authority, Provincial Agencies, River Forecast Centre and BC Emergency Management

³ Insurance Bureau of Canada 2013

⁴ <https://www.victoria.ca/EN/main/residents/public-safety/emergency-preparedness/tsunami-readiness.html>

- Accurate evaluation of risk
- Rapid public notifications
- Coordination between government agencies
- Appropriate determination of evacuation routes
- Identification of reception areas

Section 2 of this Plan outlines the framework to achieve the above response goals. It is expected that the Local Authority will continually assess the risk and potential impact of an emergency situation and adjust accordingly.

SECTION 2 OPERATIONAL EVACUATION PLAN

2.1 Overview

The primary objective of an evacuation response is to protect the public from the adverse effects, or potential adverse effects of an emergency. The decision to evacuate will be made by the Incident Commander in conjunction with the EOC Director based on a current and projected threat assessment.

An important planning consideration when determining if an evacuation is required and to what extent it is required, is the early identification of indicators and triggers.

Indicators are information-based forecasts and predictions such as: rainfall, wind speed and direction, temperature, humidity etc. (See Section 2.3.1 for Threat Level Monitoring).

Triggers are pre-determined decision points that may be related to the hazard affecting a particular geographical point such as: distance of the hazard to the public and / or important infrastructure, the nature of the hazard (toxic fumes, set back distances etc.), and historical events of comparison. (See Section 2.3.2 for Evacuation Trigger Points).

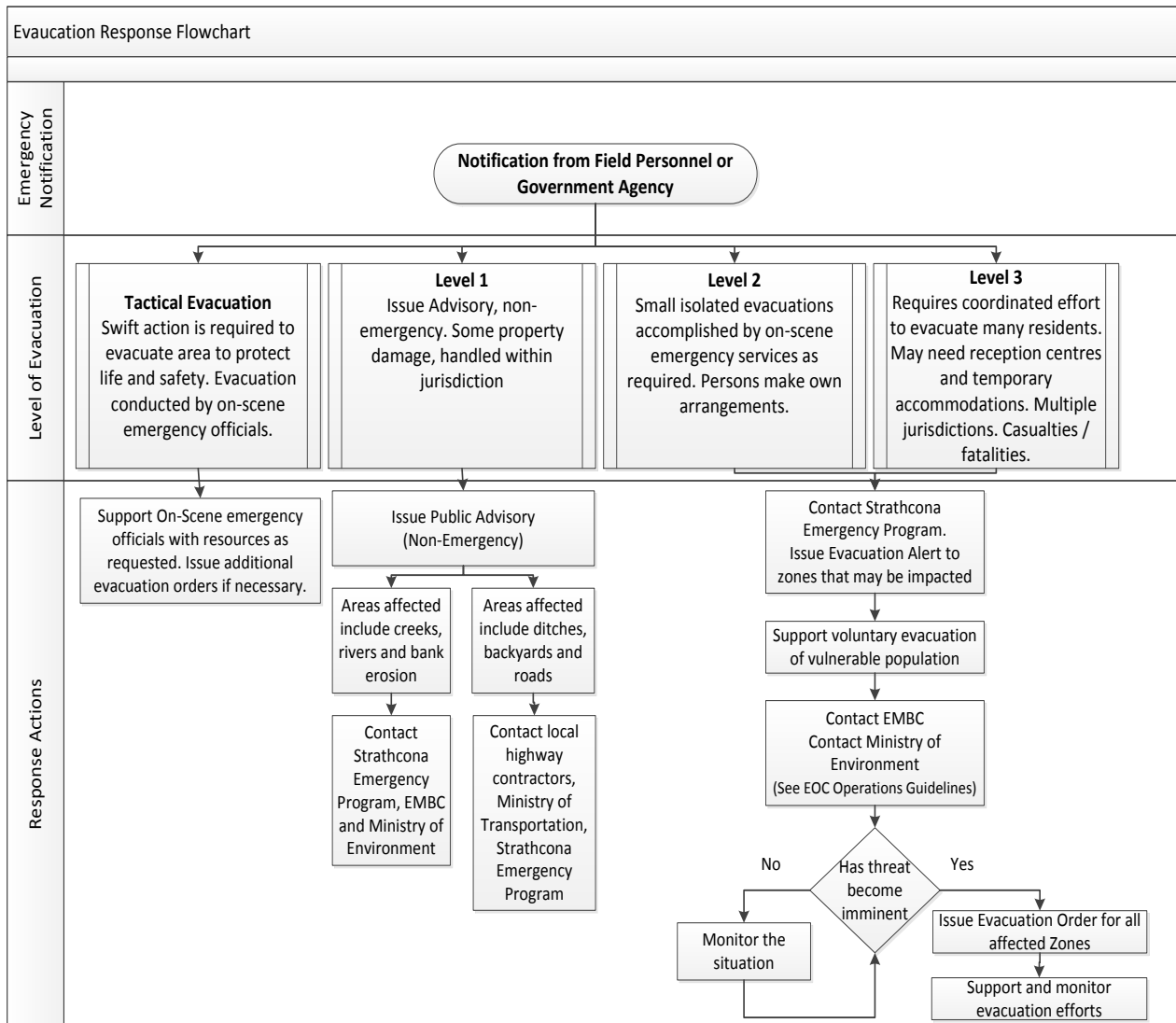
The notice to evacuate may require rapid implementation without the ability / time to declare a State of Local Emergency (SOLE). The Incident Commander / First Responders and / or EOC Director may activate a tactical evacuation response based on the evaluation of the risk whenever deemed necessary for the protection of life, health and safety of the public.

2.2 Evacuation Response Actions

2.2.1 Evacuation Response Flow Chart

Upon receipt of any incident notification that may require an evacuation response, the following actions will be considered.

Figure 1: Evacuation Response Flowchart



2.3 Evacuation Response

2.3.1 Threat Level Monitoring

The table below represents various factors to be monitored when considering an evacuation or the potential for an evacuation in the near term. A full evaluation of each item in context of the situation must be taken into consideration. Note, this list is not exhaustive of all potential aggravating and mitigating factors to consider.

Primary factors to consider

Secondary factors to consider

| | | Wildfire | Industrial Fire / Explosion | Hazmat Release | Flooding | Earthquake |
|---------------------|---|----------|-----------------------------|----------------|-----------|------------|
| Meteorological | Are winds prevailing towards the community | Primary | Primary | Primary | | Primary |
| | Are winds expected to increase in near term | Primary | Primary | Primary | | Primary |
| | Is humidity lower than temperature | Primary | | | | |
| | Are temperatures expected to rise | Primary | Primary | Primary | Primary | Primary |
| | Are temperatures expected to fall | Primary | Primary | Primary | Primary | Primary |
| | Is rain / snow expected in the forecast | Primary | | | Primary | Primary |
| Environmental | Is there a threat of contamination from the environment | | Primary | Primary | Primary | |
| | Is there a need to isolate the area to protect vegetation or animal habitat | | | Primary | Primary | Primary |
| | Is there a toxic element in the environment i.e. invasive species, algae, leaching material, runoff, spill | | Primary | Primary | Primary | |
| Human Health | Has air quality reached unsafe levels | Primary | Primary | Primary | | |
| | Is air quality expected to worsen or improve | Primary | Primary | Primary | | |
| | Is there or will there be a prolonged issue with sanitation | Primary | Primary | Primary | | Primary |
| | Is there or will there be a prolonged issue with lack of heat / cooling of residential units | Primary | Primary | Primary | Secondary | Primary |
| | Is evacuation / isolation necessary to prevent spread of disease | | | | Primary | |
| | Is there or will there be a prolonged issue with radiation | | | Primary | Secondary | |
| Life Safety | Is there or will there be a prolonged issue with exposure to toxic emissions | Primary | Primary | Primary | Secondary | |
| | Is there a threat of violence to community members | | | | | |
| | Has local infrastructure become unstable / inaccessible posing a threat of injury | Primary | Primary | Primary | Primary | Primary |
| | Has the carrying capacity of the community been dangerously exceeded | | | | | |
| Expert Opinion | Is there a lack of emergency services (police, fire, ambulance) | Primary | Primary | Primary | Primary | Primary |
| | Has an outside agency suggested evacuation for public protection (forestry, health authority, fish and wildlife etc.) | Primary | Primary | Primary | Primary | Primary |
| | Has an outside agency indicated an that there is an imminent threat to the public that could potentially require evacuation | Primary | Primary | Primary | Primary | Primary |
| Available Resources | Has an incident historically prompted an evacuation | Primary | Primary | Primary | Primary | Primary |
| | Are there enough resources locally to facilitate an evacuation | Primary | Primary | Primary | Primary | Primary |
| | Is there enough time to evacuate | Primary | Primary | Primary | Primary | Primary |
| | Is an evacuation centre accessible | Primary | Primary | Primary | Primary | Primary |
| | Is the evacuation centre affected by the emergency | Primary | Primary | Primary | Primary | Primary |
| | Is there a mass emergency affecting multiple jurisdictions that may be affecting resource availability | Primary | | | Primary | Primary |

2.3.2 Evacuation Trigger Points

Evacuation trigger points are determined based on the proximity of a threat to the local population. They are typically geographical locations that, once crossed by a hazard, triggers actions taken to issue evacuation alerts and / orders.

The locations of trigger points are determined based on an assessment of the threat, the rate of advancement and current and forecasted conditions. Points should remain flexible as situations may rapidly change without notice. The Incident Commander, in conjunction with the EOC Director and Evacuation Group Leader will determine appropriate trigger points. Wherever possible, technical specialists should assist in developing trigger points.

The table below outlines possible actions to be taken at certain trigger points.

Note: Certain actions can only be taken where time permits.

| Distance to Threat (Hours) | EOC Activation Level | Evacuation Response Actions |
|----------------------------|----------------------|--|
| 0 – 12 | 3 | <ul style="list-style-type: none"> • Activate EOC or Alternate EOC (full activation) • Declare a SOLE • Confirm activation of SRD or Provincial EOC • Establish evacuation zone(s) and evacuation routes • Issue Evacuation Order (See Appendix D for Script) <ul style="list-style-type: none"> ○ Contact SRD Emergency Program ○ Initiate media messaging (radio, TV) ○ Update social media sites (Municipal website, Facebook, Twitter) ○ Use physical means where possible: <ul style="list-style-type: none"> ▪ Door-knocking and loud hailers • Establish roadblocks • Contact BC Transportation to assess stability and threat to south bridge • Cordon off area (for small isolation zone) • Activate reception centres (for extended durations and / or where damage is extensive, and residents will require temporary shelter) <p>Additional Actions (time permitting and as required):</p> <ul style="list-style-type: none"> • Mobilize evacuee transportation to collection / muster points • Conduct aerial survey to locate transient population and / or recreational users • Notify medical facilities of mass casualties • Activate Mutual Aid Agreements and request support where needed |

| Distance to Threat (Hours) | EOC Activation Level | Evacuation Response Actions |
|----------------------------|----------------------|---|
| 12-24 | 3 | <ul style="list-style-type: none"> • Activate EOC (full activation) • Place alternate EOC on standby • Contact SRD and Province and confirm standby of EOC • Contact BC Transportation to assess stability and threat to south bridge • Determine evacuation zone(s) and evacuation routes • Issue Evacuation Alert (See Appendix D for Script) <ul style="list-style-type: none"> ○ Initiate media messaging (radio, TV) ○ Update social media sites (Municipal website, Facebook, Twitter) • Pre-determine roadblock locations and assignments • Place transportation resources on standby • Place reception centres on standby • Notify Mutual Aid partners of potential resource needs • Close non-essential services / business and schools • Consider transportation of vulnerable population and livestock • Continue to monitor the situation (See Section 2.3.1 Threat Level Monitoring Table) |
| 24-36 | 3 | <ul style="list-style-type: none"> • Activate EOC (full activation) • Notify Province and SRD and confirm EOC activation / standby • Issue Evacuation Alert • Contact BC Transportation to assess stability and threat to south bridge • Consider closure of non-essential services / business and schools • Consider transportation of vulnerable population and livestock • Continue to monitor the situation (See Section 2.3.1 Threat Level Monitoring) |
| 36-48 | 2 | <ul style="list-style-type: none"> • Activate EOC (partial activation) • Commence tactical evacuation planning • Identify and prioritize evacuation zone(s), collection points and evacuation routes • Contact BC Transportation to assess threat and stability of south bridge • Issue Public Notice (Municipal website, Facebook, Twitter, signage etc.) • Identify roadblock locations and assignments • Identify transportation needs • Identify reception centre needs (location, capacity, supplies etc.) • Identify external emergency resource needs (police, fire, Ambulance) • Place resources and personnel on standby • Contact SRD and Province confirm standby of EOC • Continue to monitor the situation (See Section 2.3.1 Threat Level Monitoring) |
| 48+ | 1 | <ul style="list-style-type: none"> • Activate EOC (partial activation) • Contact technical specialists to validate trigger points • Identify special needs facilities and vulnerable populations • Contact SRD and confirm standby of EOC • Identify evacuation resource requirements • Contact Mutual Aid partners to determine resource availability • Monitor the situation (See Section 2.3.1 Threat Level Monitoring) |

2.3.3 Vulnerable Population

2.3.3.1 Special Facilities

Special facilities are responsible for the welfare of their patients and clients. They are required to maintain an emergency plan which includes provisions for evacuation. Whenever possible, advanced warning at an **Evacuation Level 1** should be given to special facilities for them to effectively implement their evacuation plans.

Special Facilities Include:

- Hospitals
- Health clinics
- Special nursing facilities
- Nursing homes
- Assisted living centres (for disabled and elderly)

If an evacuation of these facilities is required, patients should be transported with the appropriate medical and / or security support to a facility that is comparable in capability of standard of care. The facility operator is responsible for making these arrangements, however when there is insufficient time to do so, they may request assistance from BC Emergency Health Services.

See Appendix A Vulnerable Population and Critical Infrastructure

2.3.3.2 Special Needs Population

Special needs populations are those individuals which will require evacuation assistance in the form of transportation and shelter and possibly some medical assistance.

These include, but are not limited to:

- Home bound elderly
- Public transportation dependent individuals and families
- Economically isolated individuals and families

Whenever possible, provisions should be made to ensure that these populations are included and accounted for in evacuation planning. Planning for special needs populations may include multi-lingual messaging, collection points within proximity to economically isolated regions, door-to-door transportation from homes to temporary housing.

2.3.3.3 Schools and Childcare

Evacuation of a school will fall under the jurisdiction of the school district, working in coordination with the EOC. If an evacuation of a school is required, students should be transported by bus to another facility outside of the risk area, where they can be accounted for, and picked up by a parent or guardian. The public should be immediately notified of these arrangements to facilitate a timely transfer and reduce the risk of those attempting to gain access to an unsafe site.

When there is advanced warning of an emergency, schools should be closed.

See Appendix A Vulnerable Population and Critical Infrastructure

2.3.3.4 Non-residents and Seasonal Visitors

Evacuation planning and response must account for expected increases in population due to tourism (seasonal) and during special events. Efforts should be made when possible to contact event organizers and tourist facilities including hotels, inns and lodges in order to anticipate additional evacuation assistance that may be required in form of shelter, supplies and transportation.

In situations where there is enough advanced warning of an emergency, organized events and tourist facilities should consider suspending activity.

2.3.4 Levels of Evacuation

2.3.4.1 Alert

An Alert indicates that there is a potential for the full or partial evacuation of all or a portion of the Village. No emergency actions are required however conditions should be monitored closely by EOC Director, and public notices should be issued accordingly i.e. steam flow advisories, rainfall warnings, wind warnings etc.

2.3.4.2 Level One

Normal "Level One" evacuation will be initiated by the on-scene emergency services, i.e. small flood, hazmat release. Persons will normally make their own arrangements and stay with friends, relatives or neighbours. Emergency services on the scene shall keep record of names, addresses and telephone numbers of where these people may be located.

2.3.4.3 Level Two

Involves greater numbers of people displaced due to a large flood, or small wildfire etc. or persons evacuated who have no place to stay and require assistance. This will require involvement of other agencies, (i.e. Emergency Support Services, etc.) for assistance, registration, and placement. Coordination of services by the Emergency Program Coordinator is required.

2.3.4.4 Level Three

A disaster causing large-scale evacuation such as extensive flooding, or out of control wildfire. Overall coordination of direction will be provided through the establishment of the EOC. Operational control will be established through an on-scene incident command post.

2.3.5 Evacuation Stages

2.3.5.1 Tactical Evacuation

When an incident occurs with little or no warning, a tactical evacuation is conducted by emergency responders at the scene (Fire, Police and Ambulance) for the immediate protection of life and health. The EOC Director will be immediately notified for additional support in issuing formal declaration of SOLE, issuing formal evacuation orders / alerts, and procuring additional resources and expanding evacuation orders as necessary.

2.3.5.2 Stage 1 - Evacuation ALERT

A process to alert the population at risk of the potential need for evacuation. The Evacuation Alert advises that because of the danger they should be prepared to evacuate the area within a specific time frame (i.e. 30 minutes or less). This Evacuation Alert may allow the population at risk to begin an orderly preparation to voluntarily leave the affected area. However, the reality of the situation may require immediate action with very short notice.

2.3.5.3 Stage 2 - Evacuation ORDER

An Evacuation Order will only be issued by authorities in response to the imminent danger and potential of loss of life or injury to the population at risk in the affected area. These notices are issued in the interest of LIFE SAFETY. Members of the Police, Local Fire Departments, and the Local Authorities may be involved in expediting that action through door-to-door contact, television, radio and electronic media.

2.3.5.4 Stage 3 - Evacuation RESCIND

The population at risk is allowed to return to the area previously evacuated, having been advised that the danger has passed. There is the possibility that the danger may re-manifest itself and the Evacuation Notification might need to be re-instated.

2.3.6 Evacuation Zones

Evacuation Zones have been determined based on an evaluation of flood risk, wildfire risk etc. in relation to population density, available evacuation routes and locations of reception centres.

Upon issuing an Evacuation Order or Alert, emergency personnel should be assigned to each zone to facilitate the movement of traffic out of the evacuation zones.

Table 3: See Appendix G Maps.

| | |
|--------|---|
| Zone 1 | This area extends along the north shore of the Village from Kelsey Wharf to the northern junction between Sayward Road and Salmon River Mainline. The Kelsey Bay and Government Wharfs are located in this area, as well as a few small businesses and the Kelsey Bay RV Campground, which has 6 oceanfront sites, as well as a boat launch, with peak seasons being May – September. |
| Zone 2 | This area is the most populated area, with a mix of residential, business and recreational users. It extends from the Junction of Sayward Road and the Salmon River Mainline to the M Branch Forest Service Road. The Village’s main infrastructure and emergency services are located in this zone, including the Village sewage treatment centre. |
| Zone 3 | This area extends from the M Branch Forest Service Road to the southern junction of the Salmon River Mainline. There are recreational areas, important estuary and trails in this zone. The Salmon River Inn and Legion are also located in this area. |

2.3.7 Reception Centres

The number and location of Reception Centres that will be activated, will be determined by the Emergency Operations Director and based upon:

- Proximity to the emergency
- Available travel routes from the local of the emergency
- Safety of the area
- Number of people evacuated

If time does not permit to fully activate reception centres, evacuees may be directed to one or more reception centres as an initial assembly point, where they can be reassigned to a permanent reception centre once it has been fully activated. Personnel should be immediately dispatched to reception centres and/or initial assembly points and begin to register evacuees. For a large scale evacuation, consideration should be given to activating Reception Centres in other communities (Campbell River). See Appendix C for Reception Centre Locations.

2.3.8 Transportation Logistics

The assistance of individuals without their own means of transportation will require additional resources and cooperative assistance from the community. Vulnerable populations and those with special needs will require relocation assistance.

Hazard mapping may be used to assist the Emergency Operations Center Command Staff in determining the priorities for evacuation and assistance required for those vulnerable populations.

The intent of the transportation plan is to minimize the negative consequences of evacuees being trapped by a threat from flooding, wildfire, hazardous substance etc. Evacuation routes will be made available to all emergency response agencies and the public prior to an emergency.

The Command Staff will activate a request for additional resources (from within the community or from surrounding communities) through the Logistics Section. These resources may include a mutual aid request to the Canadian Forces (19 Wing), located in Comox, to provide overhead visual reference of changing conditions. *See Appendix B for Support Services.*

2.3.9 Emergency Transportation Planning

There is no public transportation in the Village of Sayward, other than the Age Friendly Van which is available to subsets of the population. There are no taxis or charter buses for hire. In the event of a mass evacuation, residents will be reliant upon their own transportation unless external resources are chartered from Campbell River which is located 55 minutes to the south east. *See Appendix B for Support Services.* Transportation plans should be made as soon as possible under the threat of a potential or imminent evacuation. Special consideration should be given to accessibility to the area. The bridge south of the community should immediately be assessed by BC Transportation for reliability as well as the potential and / or imminent threat of failure.

2.3.10 Evacuation Routes

Primary evacuation routes have been modelled based on population density, accessibility, road reliability, as well as accounting for those that may have accessibility challenges. Emergency service crews should be immediately dispatched to assigned evacuation zones to facilitate lane reversals, traffic flow and road blocking. Evacuation routes must take into account the estimated threat arrival time and traffic peak times. Certain conditions may not allow for complex traffic re-routing (*see Appendix G for Evacuation Map*).

2.3.10.1 Zone 1

Zone 1 will be evacuated south along Sayward Road to the Reception Centre in Zone 2 or to the Island Highway for out of town evacuations. The Salmon River Mainline can be used as an alternate route.

2.3.10.2 Zone 2

Zone 2 will be evacuated south using Sayward Road to Island Highway. M Branch Road should not be used to evacuate residents. The road is only suitable for 4-wheel drive vehicles under ideal conditions. Using this road could lead to additional emergency situations, particularly during severe weather events (snow, rain, ice etc.).

2.3.10.3 Zone 3

Zone 3 will be evacuated south along Sayward Road to Island Highway. The Salmon River Mainline can also be used as an alternate.

2.4 Emergency Alerting Systems

A critical factor in minimizing risk to life and loss of property is rapid notification to the public and all relevant stakeholders.

Once an event has been reported, the Emergency Operations Centre Director may initiate an emergency notification to the public.

2.4.1 Media Alerts

The Village of Sayward does not have an alerting system. Media resources such as the Municipal website, Facebook and Twitter are the most common methods used to relay information to the public. In addition to this, local radio and television stations can be contacted, time permitting. *See Appendix B Support Services.*

2.4.2 Alert Ready

Alert Ready is Canada's Mass Alerting System. It is used to broadcast lifesaving emergency information through television, radio and LTE-connected and capable wireless devices. No subscription is required to receive alerts on wireless devices.

In the event of an imminent emergency requiring a mass evacuation, Emergency Management BC can activate the Alert Ready System to distribute a pre-approved emergency alert to the region Sayward. Note: this system will automatically be activated for major earthquakes prompting tsunami warnings in the area.

2.4.3 Public Evacuation Scripts

Pre-approved public evacuation scripts are critical to ensure that notification and response times are maximized, particularly in an evacuation event. Scripts are pre-populated into the Connect Rocket messaging system, detailing emergency evacuation procedures, routes and maps. Scripts have also been distributed for use by Emergency Management BC to ensure redundancy with between the local and provincial systems in the event of a communications disruption. *Refer to Appendix D for pre-approved Scripts.*

2.4.4 Access Control and Security

Security in evacuated areas is extremely important to protect the health and safety of the population outside of the evacuation zone, and to protect property within the evacuation zone.

Law enforcement will establish roadblocks to limit entry into evacuated areas and, where possible, conduct periodic roving patrols within such areas to deter theft by those on foot. To the extent possible, fire departments may take measures to ensure continued fire protection.

If an evacuated area has sustained damage and cannot be reoccupied for an extended period of time, a sign-in / sign-out protocol may be required, to monitor and limit access to emergency workers, homeowners, business owners, utility workers, and contractors restoring damaged structures and removing debris.

2.4.5 Recall of Evacuees

Following the call-down of an emergency, when safe to do so, Evacuation Rescind will be issued. All evacuated persons will be contacted using the contact information provided at the time of evacuation. Social media outlets will also be updated with information regarding re-entry protocols etc. The Reception Centre, if established, will remain open until all the evacuated public has been advised of the call-down / rescind.

2.4.6 Re-entry Protocol

Evacuees returning to their homes or businesses in evacuated areas require the same consideration, coordination, and control as the original evacuation. For short-term incidents, the Incident Commander will normally make the decision to return evacuees and disseminate the message at the incident location as appropriate. For large-scale evacuations, the decision will normally be made by the EOC Director.

APPENDIX A - VULNERABLE POPULATIONS AND CRITICAL INFRASTRUCTURE

This page has been left blank intentionally.

| Zone 1 | | | | | |
|--|--|-------------------|----------|-------------------|--------------|
| Vulnerable Population and Important Businesses | | | | | |
| Facility Type | Facility Name | Address | | Main Number | |
| Business | Western Forest Products (Dry Land Log Short) | 80 Sayward Road | | 250-282-3290 | |
| Business | Kelsey Bay Warf | 16 Sayward Road | | 250-282-0018 | |
| Business | Government Warf (Sayward Harbour Authority) | 16 Sayward Road | | 250-282-0178 | |
| Business | Hardwicke Transportation | 16 Sayward Road | | 250-282-3607 | |
| Recreation and Campgrounds | | | | | |
| Facility Type | Facility Name | Units | Capacity | Address | Main Number |
| Campground | Kelsey Bay RV/Campground | 6 | -- | 23 Sayward Road | 250-282-3762 |
| Critical Infrastructure | | | | | |
| Facility Type | Facility Name | Address | | Main Number | |
| Lift Stations | | See Map | | | |
| Zone 2 | | | | | |
| Vulnerable Population and Important Businesses | | | | | |
| Facility Type | Facility Name | Address | | Main Number | |
| Medical Clinic | Sayward Primary Health Care Clinic | 601 Kelsey Way | | 250-282-3815 | |
| Government | Municipal Works Yard | 560 Kelsey Way | | 250-282-5509 | |
| Government | Village Office | 652-A H'Kusam Way | | 250-282-5512 | |
| School | Sayward School | 690 Kelsey Way | | 250-282-3314 | |
| Library | Sayward Branch Library | 641 Kelsey Way | | 250-282-5551 | |
| Recreation and Campgrounds | | | | | |
| Facility Type | Facility Name | Units | Capacity | Address | Main Number |
| Campground | Village of Sayward Campground | | | 652-A H'Kusam Way | 250-282-5512 |
| Emergency Services | | | | | |
| Facility Type | Facility Name | Address | | Main Number | |
| Fire Hall | Fire Hall #1 | 620 Kelsey Way | | 250-282-5505 | |
| Police | RCMP | 610 Kelsey Way | | 250-282-5522 | |
| Ambulance | BC Ambulance Services | 620 Kelsey Way | | 250-2823600 | |

| Zone 2 | | | | | |
|--|---------------------------------|-------|----------------|-----------------|--------------|
| Critical Infrastructure | | | | | |
| Facility Type | Facility Name | | Address | | Main Number |
| Treatment Centre | Sayward Sewage Treatment Centre | | See Map | | |
| Lift Stations | | | See Map | | |
| Zone 3 | | | | | |
| Vulnerable Population and Important Businesses | | | | | |
| Facility Type | Facility Name | Units | Capacity | Address | Main Number |
| Hotel | Salmon River Inn | | -- | 714 Sayward Rd, | 250-244-4716 |
| Recreation and Campgrounds | | | | | |
| Facility Type | Facility Name | | Address | | Main Number |
| Recreation | Royal Canadian Legion | | 699 Sayward Rd | | 250-282-5591 |
| Recreation | Salmon River Estuary Trail | | | | |
| Recreation | Estuary Conservation Area | | | | |

APPENDIX B – SUPPORT SERVICES

This page has been left blank intentionally.

| Emergency/Medical Services | |
|---|----------------|
| STARS – Shock Trauma Air Rescue Emergency Link Centre | 1-888-888-4567 |
| RCMP | |
| Fire Department | |
| Ambulance (Province-wide) | |
| Local Supporting Agencies | |
| Strathcona Regional District | 250-830-6700 |
| City of Campbell River (After Hours and RCMP non-emergency) | 250-286-6221 |
| City of Campbell River (After Hours and Fire non-emergency) | 250-286-6266 |
| BC Government Agencies | |
| Emergency Management BC (EMBC) | 1-800-663-3456 |
| BC Transportaiton | 1-877-215-7122 |
| Canada Government Agencies | |
| Environment Canada | 604-664-9100 |
| Environment Canada Weather | 1-888-292-2222 |
| Geological Survey of Canada (GSC) Pacific - Sidney, BC | 250-363-6500 |
| Earthquakes Canada, Sidney | 250-363-6500 |
| River Forecast Centre | 250-356-7506 |
| Transportation Services | |
| Age Friendly Van | |
| Local Media | |
| 99.7 2Day FM Radio | 250-287-4444 |

APPENDIX C – EMERGENCY OPERATIONS AND RECEPTION CENTRES

This page has been left blank intentionally.

| Village of Sayward Emergency Operations Centres (EOC) | | | | |
|---|-----------------------------------|-------------------|--------------|--|
| Facility Name | Amenities | Address | Main Number | After Hours |
| Municipal Hall | | 652-A H'Kusam Way | 250-282-5512 | |
| Strathcona Regional District Emergency Operations Centres | | | | |
| Facility Name | Amenities | Address | Main Number | After Hours |
| SRD Boardroom | | 301-990 Cedar St. | 250-830-6700 | 250-218-0882 Fire Dispatch: 250-286-6266 |
| CR SAR Building | Has generator for 60% of building | 261 Larwood Rd. | 250-923-0359 | Fire Dispatch: 250-286-6266 CR Yard Works: 250-287-7444 |
| Village of Sayward Reception Centre | | | | |
| Facility Name | Amenities | Address | Main Number | After Hours |
| Kelsey Recreation Centre (Primary) | | 652-A H'Kusam Way | 250-282-5500 | |
| Heritage Hall | | 1257 Sayward Road | 250-282-0192 | |

APPENDIX D – SCRIPTS

This page has been left blank intentionally.

EVACUATION ALERT

[DESCRIPTOR OF AREA]

[DATE (mm/dd/yyyy) AND TIME (24-hr clock)]

An Evacuation Alert has been issued by [Local Authority/First Nation] at the Emergency Operations Centre (EOC).

[Briefly describe event and potential risk]

Because of the potential danger to life and health, the [Local Authority/First Nation] has issued an **Evacuation Alert** for the following areas:

[Geographic description including boundaries and properties potentially impacted]

An Evacuation Alert has been issued to prepare you to evacuate your premises or property should it be found necessary. Residents will be given as much advance notice as possible prior to evacuation; however you may receive limited notice due to changing conditions.

[Provide map or description of potential evacuation route and map of evacuation alert area]

WHAT YOU SHOULD DO:

- Locate all family members and designate a meeting area outside the evacuation area, should an Evacuation Order be called while separated.
- Pack essential items such as government-issued ID, medications, eyeglasses, valuable papers (e.g. insurance, credit, and mortgage information), immediate care needs for dependents and, if time and space permits, keepsakes for quick departure.
- Prepare to move disabled persons, children and/or neighbours, if assistance is needed.
- Prepare to take pets with you and move livestock to a safe area (if possible).
- Arrange transportation for all your household members. Fill the gas tanks of personal vehicles. If transportation assistance is needed, call [contact number].
- Arrange accommodation for all members of the residence, if possible.
- Wait for an Evacuation Order to be issued before evacuating. Monitor [news/radio/online source] for information on evacuation orders and location of Reception Centres.

Further information will be issued at [date/time/meeting location], or visit [website/social media page] for more information.

[Signature of Board/Chair or designate, Mayor or Designate, Chief or Designate]

[Name of Local Authority/First Nation]

EVACUATION ORDER

[DESCRIPTOR OF AREA]

[DATE (mm/dd/yyyy) AND TIME (24-hr clock)]

Pursuant to [Section 12 (1) of the BC *Emergency Program Act* / Band Council] an **Evacuation Order** has been issued by [Local Authority/First Nation] due to immediate danger to life safety caused by: [briefly describe event].

Members of the [local police department and other agencies] and other applicable agencies will be expediting this action.

The Evacuation Order is in effect for the following areas:

[Geographic description including boundaries and properties impacted.

Include map of evacuation area and evacuation route]

YOU MUST LEAVE THE AREA IMMEDIATELY

WHAT YOU SHOULD DO:

- Follow the travel route provided and register at: [ESS Reception Centre address and name of facility].
- If you need transportation assistance from the area, advise the person providing this notice or call [contact number].
- Shut off all gas and electrical appliances, other than refrigerators and freezers.
- Close all windows and doors.
- Close gates (latch) but do not lock.
- Gather your family and, if you have room, take a neighbour or someone needing transportation. Do not use more vehicles than you have to.
- Take critical items (medicine, purse, wallet, and keys) only if they are immediately available. Take pets in pet kennels or on leash.
- Do not use the telephone unless you need emergency service.

Further information will be issued at [date/time/meeting location], or visit [website/social media page] for more information.

[Signature of Board/Chair or designate, Mayor or Designate, Chief or Designate]

[Name of Local Authority/First Nation]

EVACUATION RESCIND

[DESCRIPTOR OF AREA]

[DATE (mm/dd/yyyy) AND TIME (24-hr clock)]

The Evacuation Order, pursuant to [Section 12 (1) of the BC Emergency Program Act / Band Council] issued at [date/time] to the area(s) [geographic locations] has been rescinded.

[Indicate if an Evacuation Alert remains in effect]

An Evacuation Order may need to be reissued; however, if that is deemed necessary, the Evacuation Order process will re-commence.

WHAT YOU SHOULD DO:

- Fill the gas tank of personal vehicles
- Bring a minimum of three days of food and essential supplies (e.g. medications, pet supplies) with you as local grocery stores may not yet have adequate stock
- If your animals or livestock have been relocated, call [contact number] to coordinate their safe return

For more information contact: [Local Authority/First Nation contact number]

[Signature of Board/Chair or designate, Mayor or Designate, Chief or Designate]

[Name of Local Authority/First Nation]

APPENDIX E – FORMS

EVACUATION AREA ACCESS PERMIT

NO PERSON UNDER THE AGE OF 19 WILL BE PERMITTED TO ACCESS EVACUATION AREA

This permit gives the named individual(s) the permission to travel into the Evacuation Order area as per the conditions outlined.

| | | | | | | | | | | | | | | | | | |
|--|--|---|--|---|--|---|--|--|--|--|--|------------------|--|--|--|--|--|
| Emergency EOC Contact Number | | | | PERMIT NUMBER | | | | | | | | | | | | | |
| PERMIT RESTRICTIONS | | | | | | | | | | | | | | | | | |
| PERMIT ENTRY DATE / TIME | | | | | | PERMIT EXPIRY DATE / TIME | | | | | | | | | | | |
| CHECKPOINT LOCATION | | | | | | | | | | | | | | | | | |
| DESTINATION / ADDRESS | | | | | | | | | | | | | | | | | |
| ROUTE TO DESTINATION | | | | | | | | | | | | | | | | | |
| PERMIT HOLDER'S INFORMATION | | | | | | | | | | | | | | | | | |
| FULL LEGAL NAME | | | | | | D.O.B. / AGE | | | | | | | | | | | |
| PHONE NUMBER | | | | | | DRIVER'S LICENCE # | | | | | | | | | | | |
| ADDRESS | | | | | | | | | | | | | | | | | |
| VEHICLE INFORMATION | | | | | | | | | | | | | | | | | |
| MAKE/MODEL | | | | PLATE NUMBER | | | | COLOUR | | | | | | | | | |
| APPROVED PASSENGER NAME(S) | | | | | | | | | | | | | | | | | |
| PURPOSE OF ACCESS | | | | | | | | | | | | | | | | | |
| REASON FOR ENTRY | | | | | | | | | | | | | | | | | |
| Must address at least one of the following BCEMS goals | | <input type="checkbox"/> Ensure the health/safety of responders | | <input type="checkbox"/> Protect infrastructure | | <input type="checkbox"/> Protect property | | <input type="checkbox"/> Protect the environment | | <input type="checkbox"/> Reduce economic and social losses | | | | | | | |
| | | <input type="checkbox"/> Save lives | | <input type="checkbox"/> Reduce suffering | | | | | | | | | | | | | |
| | | <input type="checkbox"/> Protect public health | | | | | | | | | | | | | | | |
| WAIVER AND AGREEMENT (RELEASE AND INDEMNITY – PLEASE READ CAREFULLY) | | | | | | | | | | | | | | | | | |
| <p>"I understand that I have voluntarily chosen to enter into an area that is under an evacuation order due to extreme and imminent hazards and as such, I accept complete responsibility and liability for my actions and choices. In consideration for being permitted to temporarily enter the evacuation area, I hereby release and forever discharge the [Local Authority / First Nation] and other responding agencies and their officers, agents, employees, contractors and volunteers (collectively, the "Released Parties") and agree to indemnify and save harmless the Released Parties from and against all losses, claims, damages, actions, causes of action, costs and expenses whatsoever, that the Released Parties may sustain, incur, suffer or be put to, including those arising from the negligence of the Released Parties, by reason of this permit or my entering into the evacuation area."</p> | | | | | | | | | | | | | | | | | |
| Name (print): | | | | | | Signature: | | | | | | | | | | | |
| Name (print): | | | | | | Signature: | | | | | | | | | | | |
| INCIDENT COMMANDER RECOMMENDATION FOR ACCESS BASED ON SAFETY CONDITIONS | | | | | | | | | | | | | | | | | |
| RECOMMENDATION | | <input type="checkbox"/> Approve <input type="checkbox"/> Deny | | NAME | | | | SIGNATURE | | | | | | | | | |
| ESCORT REQUIRED | | <input type="checkbox"/> Yes <input type="checkbox"/> No | | ESCORT NAME/CONTACT | | | | | | | | | | | | | |
| ON BEHALF OF [LOCAL AUTHORITY/FIRST NATION], TEMPORARY ACCESS AUTHORIZED BY | | | | | | | | | | | | | | | | | |
| POSITION | | | | | | NAME | | | | | | SIGNATURE | | | | | |
| SAFETY BRIEFING PROVIDED TO PERMIT HOLDER(S) AT TIME OF ISSUANCE? | | | | | | | | | | | <input type="checkbox"/> Yes <input type="checkbox"/> No | | | | | | |

PERMIT HOLDER(S) IS ONLY TO TRAVEL TO AND FROM THE DESTINATION NOTED WITH NO DEVIATION FROM THE APPROVED ROUTE.
 PERMIT HOLDER(S) IS NOT AUTHORIZED TO ENTER ONTO ANY OTHER PRIVATE PROPERTY THAN THE APPROVED DESTINATION.
 PERMIT HOLDER(S) MUST EXIT THE EVACUATION AREA BY THE PERMIT EXPIRY DATE AND TIME.
 PERMIT IS TO BE RETURNED TO CHECKPOINT PERSONNEL UPON EXIT.



EMERGENCY OPERATIONS CENTRE

EVACUATION AREA PASS-THROUGH PERMIT

**NO PERSON UNDER THE AGE OF 19 WILL BE PERMITTED TO PASS-THROUGH EVACUATION AREA
UNLESS ACCOMPANIED BY THEIR LEGAL GAURDIAN**

This permit gives the named individual(s) the permission to travel through the Evacuation Order area as per the conditions outlined.

| | |
|-------------------------------------|----------------------|
| Emergency EOC Contact Number | PERMIT NUMBER |
|-------------------------------------|----------------------|

PERMIT RESTRICTIONS

| | |
|--------------------------------------|----------------------------------|
| PERMIT ENTRY DATE / TIME | PERMIT EXPIRY DATE / TIME |
| CHECKPOINT ENTRY LOCATION | |
| CHECKPOINT EXIT LOCATION | |
| ROUTE THROUGH EVACUATION ZONE | |

PERMIT HOLDER'S INFORMATION

| | | |
|------------------------|---------------------------|--|
| FULL LEGAL NAME | D.O.B. / AGE | |
| PHONE NUMBER | DRIVER'S LICENCE # | |
| ADDRESS | | |

VEHICLE INFORMATION

| | | |
|-----------------------------------|---------------------|---------------|
| MAKE/MODEL | PLATE NUMBER | COLOUR |
| APPROVED PASSENGER NAME(S) | | |

WAIVER AND AGREEMENT (RELEASE AND INDEMNITY – PLEASE READ CAREFULLY)

“I understand that I have voluntarily chosen to enter into an area that is under an evacuation order due to extreme and imminent hazards and as such, I accept complete responsibility and liability for my actions and choices. In consideration for being permitted to pass through the evacuation area, I hereby release and forever discharge the [Local Authority / First Nation] and other responding agencies and their officers, agents, employees, contractors and volunteers (collectively, the “Released Parties”) and agree to indemnify and save harmless the Released Parties from and against all losses, claims, damages, actions, causes of action, costs and expenses whatsoever, that the Released Parties may sustain, incur, suffer or be put to, including those arising from the negligence of the Released Parties, by reason of this permit or my entering into the evacuation area.”

| | |
|----------------------|-------------------|
| Name (print): | Signature: |
| Name (print): | Signature: |

INCIDENT COMMANDER RECOMMENDATION FOR ACCESS BASED ON SAFETY CONDITIONS

| | | | |
|------------------------|--|----------------------------|------------------|
| RECOMMENDATION | <input type="checkbox"/> Approve <input type="checkbox"/> Deny | NAME | SIGNATURE |
| ESCORT REQUIRED | <input type="checkbox"/> Yes <input type="checkbox"/> No | ESCORT NAME/CONTACT | |

ON BEHALF OF [LOCAL AUTHORITY/FIRST NATION], TEMPORARY ACCESS AUTHORIZED BY

| | | |
|--|-------------|--|
| POSITION | NAME | SIGNATURE |
| SAFETY BRIEFING PROVIDED TO PERMIT HOLDER(S) AT TIME OF ISSUANCE? | | <input type="checkbox"/> Yes <input type="checkbox"/> No |

PERMIT HOLDER(S) IS ONLY TO TRAVEL THROUGH EVACUATION AREA WITH NO DEVIATION FROM THE APPROVED ROUTE.
 PERMIT HOLDER(S) IS NOT AUTHORIZED TO STOP OR ENTER ONTO ANY PRIVATE PROPERTY DURING PASS-THROUGH.
 PERMIT HOLDER(S) MUST EXIT THE EVACUATION AREA BY THE PERMIT EXPIRY DATE AND TIME.
 PERMIT TO BE RETURNED TO CHECKPOINT PERSONNEL UPON EXIT.

EMERGENCY OPERATIONS CENTRE

EXTRAORDINARY EVACUEE AUTHORIZATION FORM

Evacuation authorization is in effect for the individual(s)/property stated in this Form, as per below:

| | | EMBC TASK # | |
|---------------------------|--|--------------------|--|
| APPROVAL RESTRICTIONS | | | |
| START DATE / TIME | | EXPIRY DATE / TIME | |
| RECEPTION CENTRE LOCATION | | | |
| REASON FOR EVACUATION | | | |
| ROUTE TO DESTINATION | | | |

| EVACUEES' INFORMATION | | | |
|---|--|------------------------------------|--|
| FULL LEGAL NAME of INDIVIDUAL(S)/PROPERTY | | | |
| CONTACT INFORMATION | | | |
| HOME ADDRESS | | | |
| ESCORT/SUPPORT PERSON REQUIRED | <input type="checkbox"/> Yes <input type="checkbox"/> No | ESCORT/SUPPORT PERSON NAME/CONTACT | |

| WHAT EVACUEE SHOULD DO | |
|-----------------------------|--|
| INSTRUCTIONS FOR EVACUEE(S) | [e.g. add applicable content from Evacuation Order template (Appendix E)] |
| TAKE CRITICAL ITEMS | <input type="checkbox"/> Medicine <input type="checkbox"/> Important papers (e.g. insurance) <input type="checkbox"/> Purse/wallet <input type="checkbox"/> Pets, in pet kennel or on leash <input type="checkbox"/> Keys <input type="checkbox"/> [other] |

| EVACUEE SIGNATURE [or signature of legal guardian] | |
|--|------------|
| Name (print): | Signature: |

| RECOMMENDATION FOR APPROVAL OF EVACUATION | | | | | |
|---|--|----------|--|-----------|--|
| RECOMMENDATION | <input type="checkbox"/> Approve <input type="checkbox"/> Deny | POSITION | | SIGNATURE | |

| ON BEHALF OF [LOCAL AUTHORITY/FIRST NATION], AUTHORIZED BY | | | | | |
|--|--|---------------------------------|--|-----------|--|
| POSITION | | POSITION (e.g. EOC Director) | | SIGNATURE | |

Further information will be issued at [date/time/location] or visit [website] for more information.

APPROVAL HOLDER(S) MUST PRESENT APPROVED FORM AT RECEPTION CENTRE TO REGISTER.

EVACUATION RECORDING PROCEDURES

Ensure that all premises are reported on the Evacuation Log.

The evacuation team will use one 2-3 foot long ribbon of colour-coded, weather-resistant tape to indicate the evacuation status of each premise.

Tie the appropriate ribbon around the door knob most visible to the street. Should a door not be visible from the street, attach tape to the side of the house that is visible. Should the house not be visible from the street, place the ribbon at the entrance to the driveway (e.g. around mailbox or tree).

Use the following colour-coded, labelled ribbons:

| Colour – Meaning | Actions |
|--------------------|---|
| Blue – Not home | Needs a second visit if safe to do so. Tape the Evacuation Order to the door of the property with a note explaining the meaning of the blue tape, and instruction to call phone number on the Order for more information or instruction. |
| Pink - Notified | Ready to evacuate when ordered. Provide occupant with yellow ribbon to exchange with pink ribbon when leaving. |
| Yellow - Evacuated | Explain to residents to replace pink ribbon with yellow ribbon when they leave the premises. |
| Orange - Refused | Advise that responders will not be put at risk to rescue them. Note address, report and record the refusal. Explain the purpose of the Orange tape: so First Responders will not visit property again for evacuation notification, or be alarmed at occupied residence during patrols. Provide Order and highlight EOC contact information. |

[OPTIONAL:]

| | |
|------------------------|---|
| Red – Needs Assistance | Try to delegate assistance to neighbours. Use situational discretion for whether or not to directly assist. Explain the meaning of the tape: it is a flag for First Responders to come back to provide assistance in evacuating. Note status and actions taken and continue with evacuation notification. |
|------------------------|---|

Evacuation Notification is the Priority – Keep Moving!



EVACUATION LOG

| Incident Name: | | | | | | EMBC Task No. | | | | Date & Start/End Times: | | | | | |
|--|-----------------|--------------|--|--|--|---------------------------|-------------------------|---------------------|-----------------|------------------------------------|-------------------------|------------------|--|------|---|
| Authorizing Authority / Notifying Authority | | | | | | Notification Team: | | | | | | | | | |
| Zone #: | Community Name: | | | | | # of Occupants Present | # of Minor Children <19 | # of Pets/Livestock | Blue - Not Home | Pink - Notified | Yellow - Have Evacuated | Orange - Refused | Red - Needs Assistance <small>[Delete row if not using]</small> | Time | COMMENTS <ul style="list-style-type: none"> If RED, note type of assistance If ORANGE, note reason If RED, note type of assistance If ORANGE, note reason |
| Street Name | House # | Family Names | | | | | | | | | | | | | |
| | | | | | | | | | | | | | | | |
| | | | | | | | | | | | | | | | |
| | | | | | | | | | | | | | | | |
| | | | | | | | | | | | | | | | |
| | | | | | | | | | | | | | | | |
| | | | | | | | | | | | | | | | |
| | | | | | | | | | | | | | | | |
| | | | | | | | | | | | | | | | |
| | | | | | | | | | | | | | | | |
| | | | | | | | | | | | | | | | |
| | | | | | | | | | | | | | | | |
| | | | | | | | | | | | | | | | |

SHELTER-IN-PLACE ORDER

An incident has caused hazardous material to enter the air. Emergency response professionals are requesting that you immediately “Shelter-in-Place” by staying protected indoors until you receive instruction that it is safe to exit the building.

It is important to stay informed of updates through [applicable radio station, television channel, website, social media page].

To Shelter-in-Place:

- Go inside and close [and lock] all windows and exterior doors
- If there is a danger of explosion, close the window shades, blinds, or curtains
- Turn off all fans, heating and air conditioning systems. Close fireplace dampers
- Get your emergency kit and turn on the radio
- Cell phones may be overwhelmed or damaged during an emergency. It is ideal to have a hard-wired telephone in the room you select. If you do not have a hard-wired telephone, bring your cell phone and charger to ensure you have a method to communicate. Call your emergency contact and have the phone available if you need to report a life-threatening condition
- Go to an interior room without windows that is above-ground level, if you can. Because some chemicals are heavier than air, avoid sheltering in basements
- Bring your pets with you, and be sure to bring additional food and water supplies for them
- Use duct tape and plastic sheeting (heavier than food wrap) to seal all cracks around the door and any vents into the room. A wet towel can also be used to create a seal along doors and windows
- Monitor the radio, television, and Emergency Info BC online until you are told by local officials all is safe or you are told to evacuate

DO NOT leave your building or home until you receive notification that the danger has passed.

The hazardous material is toxic. The signs and symptoms of overexposure are as follows:

_____. If you have any of these signs or symptoms and the order to shelter in place is still in effect, contact medical help by telephone at:

_____. If the shelter in place order has been rescinded, seek immediate medical help at the following location: _____. If the situation is life-threatening or you are unable to move, dial 911 or the emergency response number in your area.

This page has been left blank intentionally.

APPENDIX F – EQUIPMENT INVENTORY

This page has been left blank intentionally.

| ITEM | QUANTITY |
|------------------------------------|----------|
| Batteries – 9 v | 4 |
| Batteries – AA | 20 |
| Batteries – AAA | 10 |
| Batteries – C | 8 |
| BBQ | 1 |
| Blankets -wool | 10 |
| Blankets – Red Cross synthetic | 28 |
| Blankets – Red Cross wool | 5 |
| Children's container of toys, etc. | 1 |
| Comfort kits | 2 |
| ESS forms kits | 5 |
| Extension cord | 4 |
| Extension cords 25' | 3 |
| First aid kits | 6 |
| Flashlight | 4 |
| Food ration | 11 |
| Generator | 1 |
| Generator oil | 1 |
| Hard hats | 15 |
| LED lights | 2 |
| Pet cages | 4 |
| Pet kit | 1 |
| Pillows, inflatable | 15 |
| Plastic storage containers 110l. | 3 |
| Plastic storage containers 189l. | 3 |
| Portable stove | 1 |
| Propane heaters | 5 |
| Rope | 1 |
| Signage kit | 1 |
| Sleeping bags | 5 |
| Sleeping cots | 14 |
| Tarp 12x20 | 1 |
| Tarp 20x40 | 1 |
| Tarp 8x10 | 3 |
| Vest kit | 1 |

Image 1



Image 2



Image 3



Image 4



Image 5



Image 6



APPENDIX G – MAPS

This page has been left blank intentionally.

**Sayward Community Wildfire Protection Plan
Fire Threat Update**



Scale 1:30000
Strathcona Regional District
Electoral Area A
Village of Sayward



| Sayward Updated Fire Threat Summary | |
|-------------------------------------|--------------|
| Updated Fuel Type | Area (ha) |
| No Threat | 1,435 |
| Low Threat | 1,018 |
| Moderate Threat | 1,481 |
| High Threat | 16 |
| Extreme Threat | 0 |
| Total: | 3,951 |

Legend

Digital Road Atlas

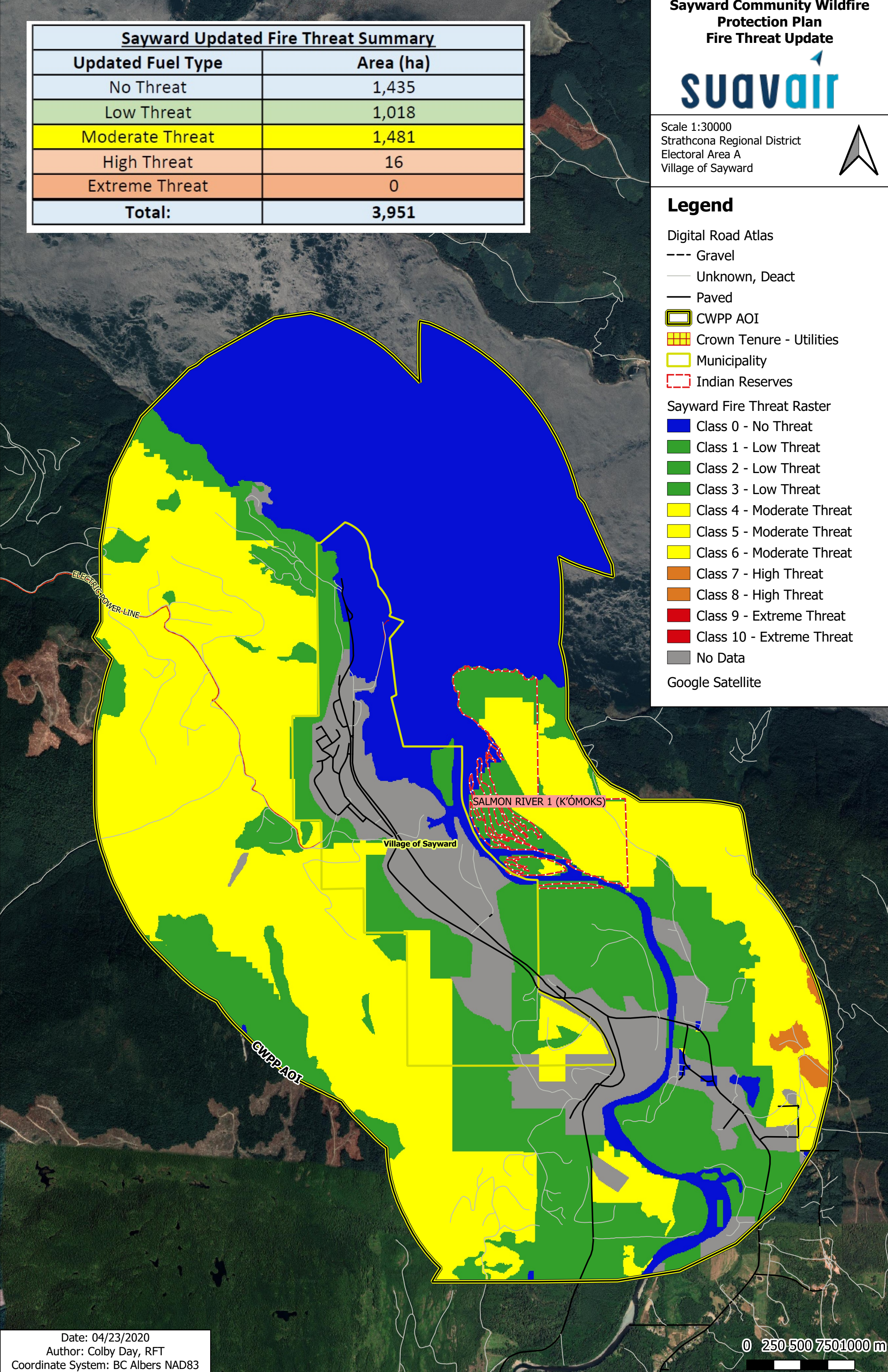
- Gravel
- Unknown, Deact
- Paved

- CWPP AOI
- Crown Tenure - Utilities
- Municipality
- Indian Reserves

Sayward Fire Threat Raster

- Class 0 - No Threat
- Class 1 - Low Threat
- Class 2 - Low Threat
- Class 3 - Low Threat
- Class 4 - Moderate Threat
- Class 5 - Moderate Threat
- Class 6 - Moderate Threat
- Class 7 - High Threat
- Class 8 - High Threat
- Class 9 - Extreme Threat
- Class 10 - Extreme Threat
- No Data

Google Satellite





Scale 1:30000
Strathcona Regional District
Electoral Area A
Village of Sayward



| Sayward Updated Fire Risk Summary | |
|-----------------------------------|--------------|
| Updated Fire Risk | Area (ha) |
| No Risk | 0 |
| Low Risk | 187 |
| Moderate Risk | 3,204 |
| High Risk | 560 |
| Extreme Risk | 0 |
| Total: | 3,951 |

Legend

Digital Road Atlas

--- Gravel

— Unknown, Deact

— Paved

□ Proposed Treatment Updated

□ CWPP AOI

□ 100m Buffer

□ Crown Tenure - Utilities

□ Municipality

□ Indian Reserves

Fire Risk Updated

□ 0.1 (No Risk)

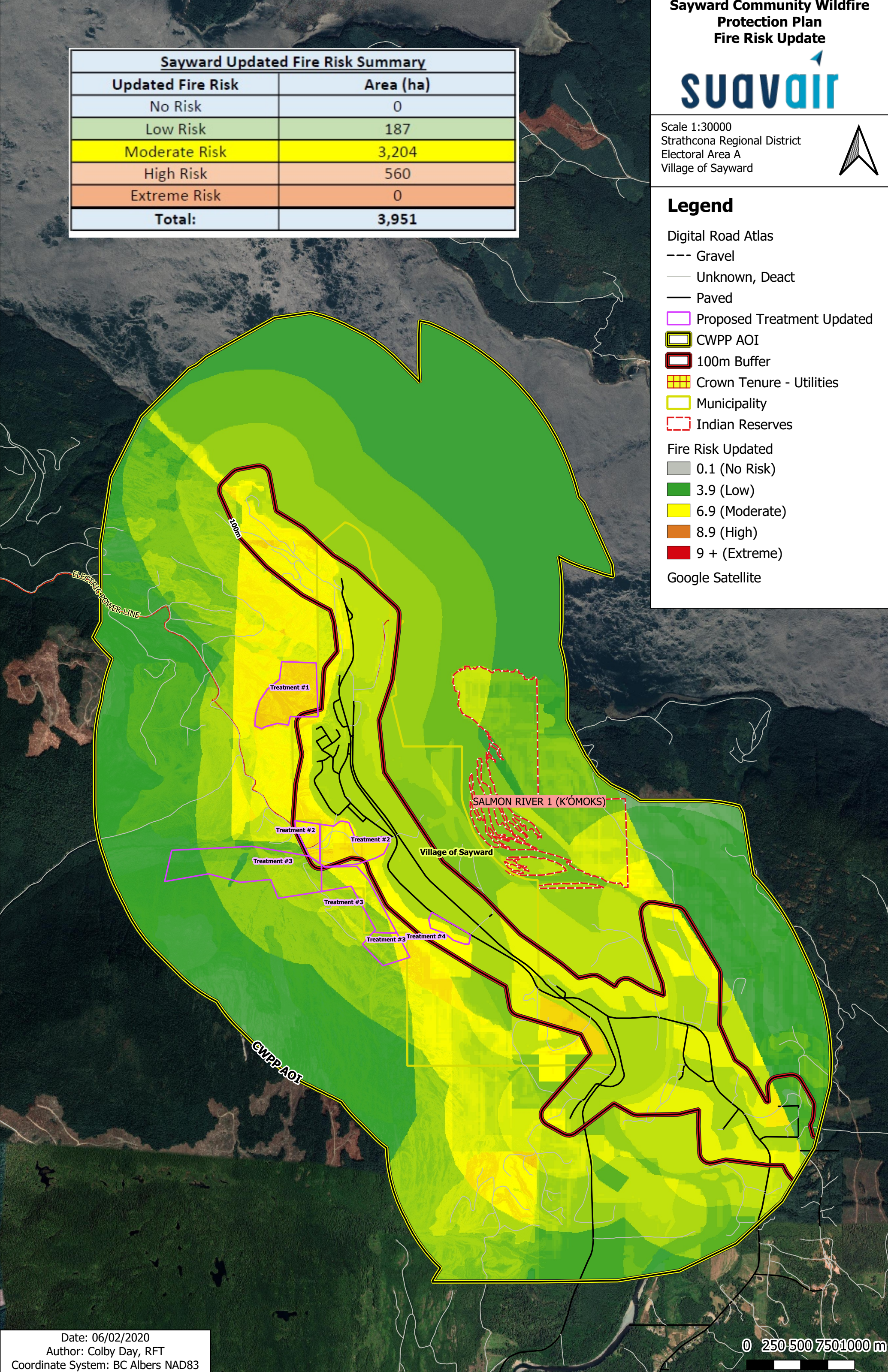
□ 3.9 (Low)

□ 6.9 (Moderate)

□ 8.9 (High)

□ 9 + (Extreme)

Google Satellite



**Sayward Community Wildfire Protection Plan
Updated Fuel Types**



Scale 1:30000
Strathcona Regional District
Electoral Area A
Village of Sayward



| Sayward Updated Fuel Type Summary | |
|-----------------------------------|-------------|
| Updated Fuel Type | Area (ha) |
| C-3 | 411 |
| C-5 | 1318 |
| D-1/2 | 566 |
| M-1/2 | 114 |
| N | 407 |
| S-3 | 63 |
| W | 1072 |
| Total: | 3951 |

Legend

Digital Road Atlas

--- Gravel

— Unknown, Deact

— Paved

▨ Crown Tenure - Utilities

▭ CWPP AOI

▭ Tree Farm Licence

▭ Crown Woodlots

▭ Indian Reserves

▭ Fire Polygon - 2019

▭ Municipality

Fuel Types Updated

■ C-3

■ C-5

■ D-1/2

■ M-1/2

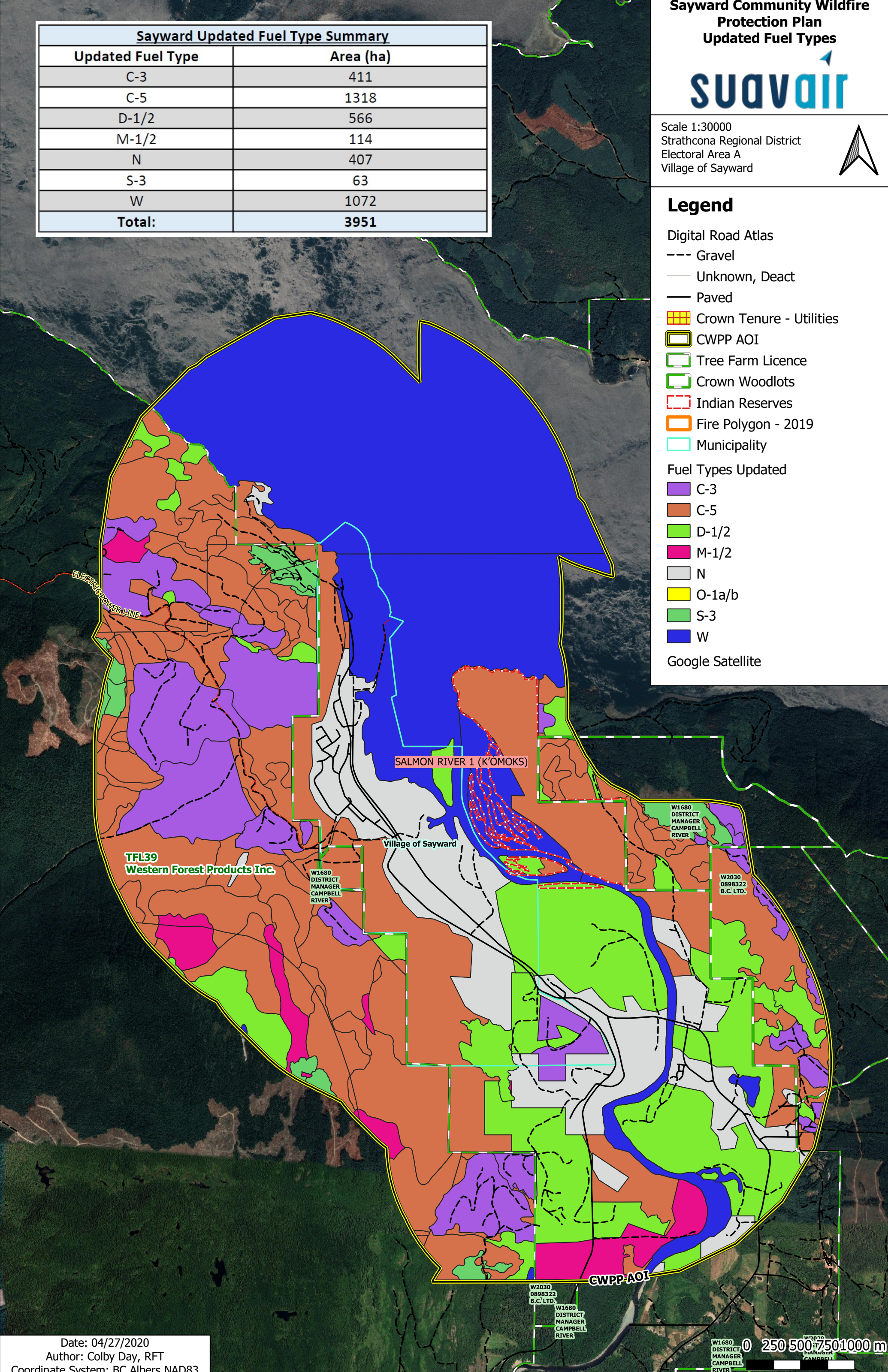
■ N

■ O-1a/b

■ S-3

■ W

Google Satellite



TFL39
Western Forest Products Inc.

Village of Sayward

SALMON RIVER 1 (K'OMOKS)

W1680
DISTRICT
MANAGER
CAMPBELL
RIVER

W1680
DISTRICT
MANAGER
CAMPBELL
RIVER

W2030
0898322
B.C. LTD.

CWPP-AOI

W2030
0898322
B.C. LTD.

W1680
DISTRICT
MANAGER
CAMPBELL
RIVER



